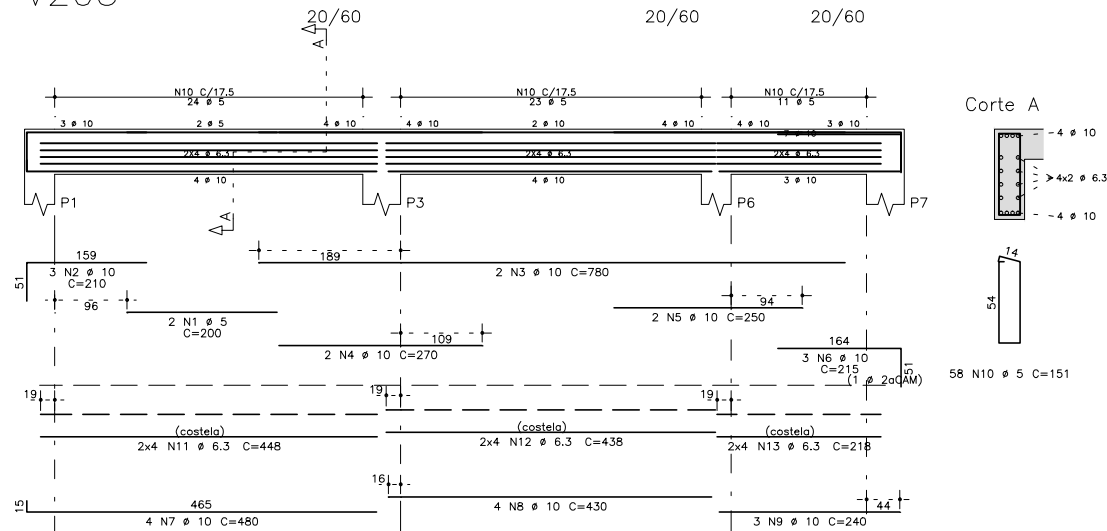
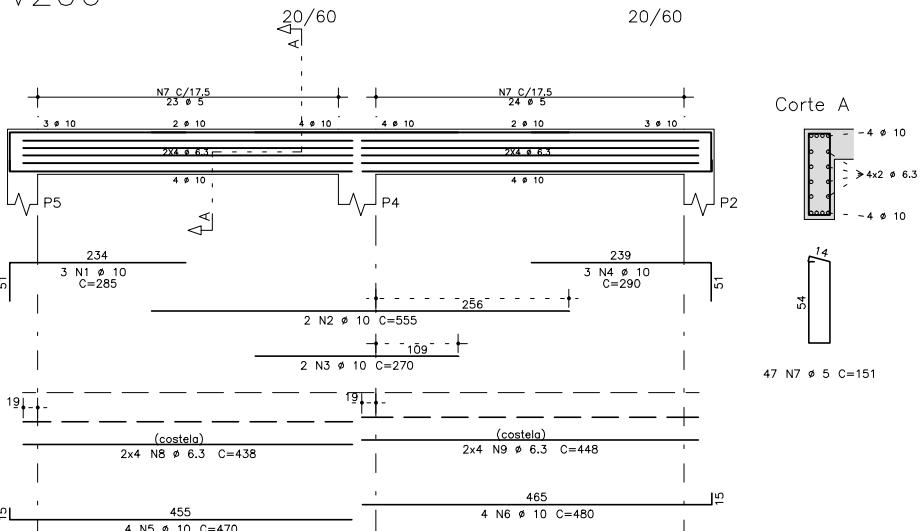


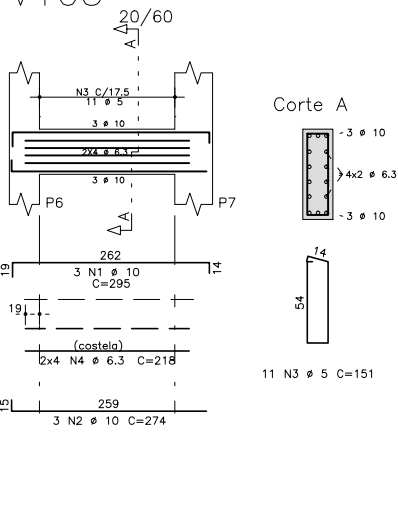
V205



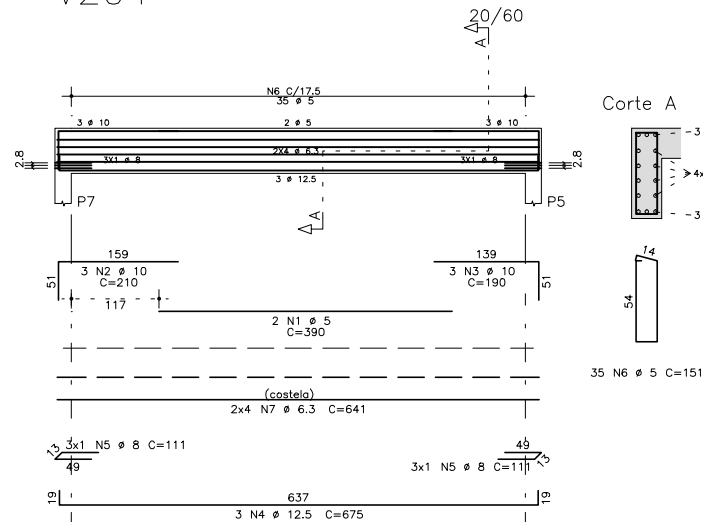
V206



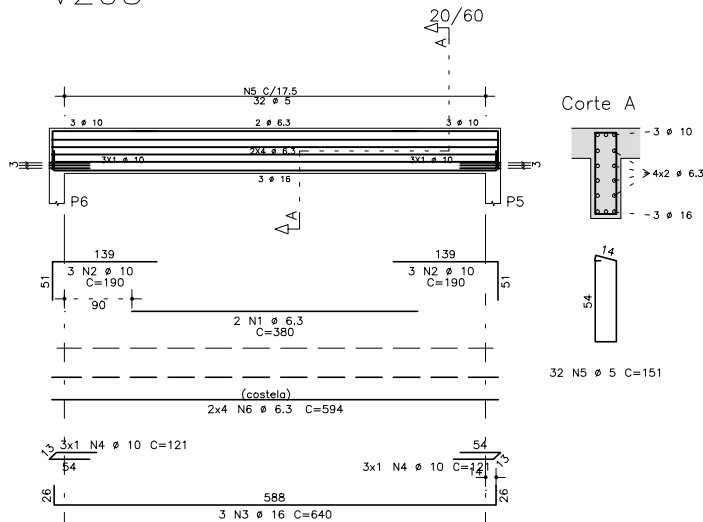
V105



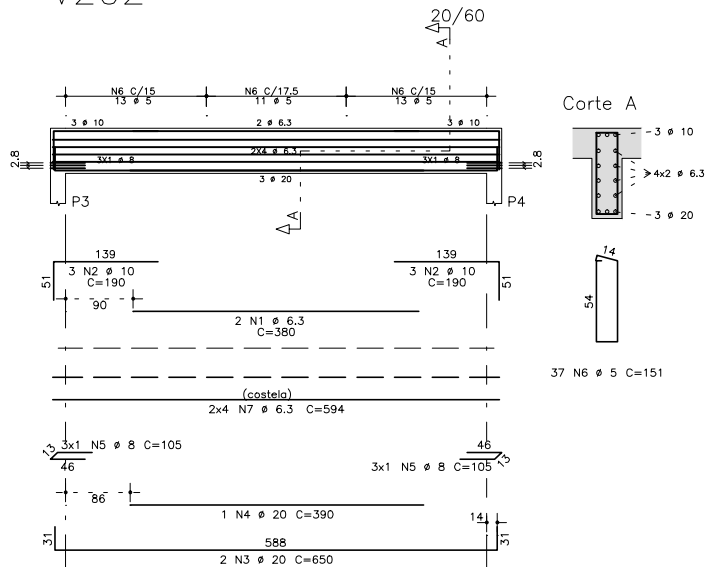
V204



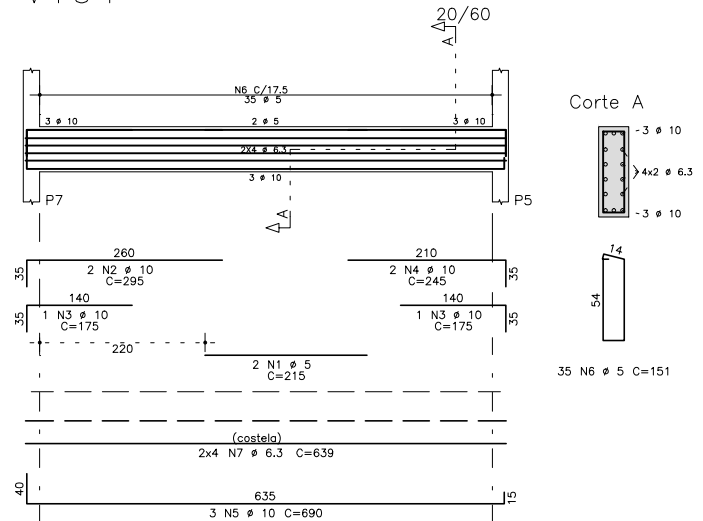
V203



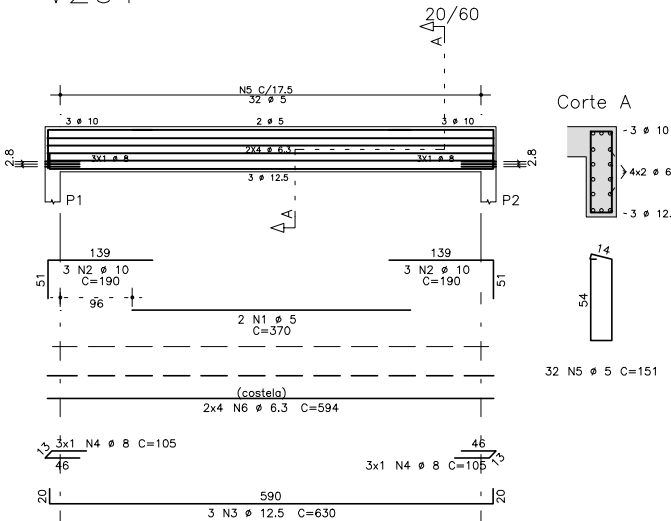
V202



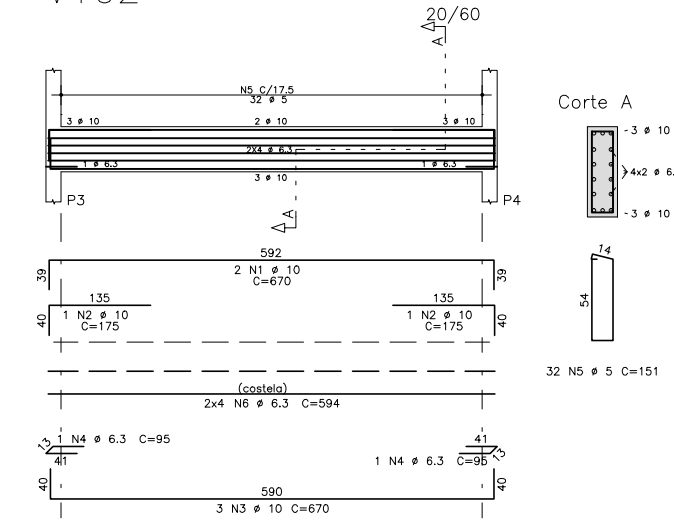
V104



V201



V102



	AÇO	POS	BIT (mm)	QUANT	COMPRIMENTO UNIT (cm)	TOTAL (cm)
V102	50A	1	10	2	215	430
	50A	2	10	2	175	350
	50A	3	10	3	670	2010
	50A	4	6.3	2	95	190
	60B	5	6.3	32	151	4832
V104	50A	6	6.3	8	594	4752
	60B	1	5	2	215	430
	50A	2	10	2	295	590
	50A	3	10	2	175	350
	50A	4	10	2	245	490
V105	50A	5	10	3	690	2070
	60B	6	5	35	151	5285
	50A	7	6.3	8	639	5112
	50A	1	10	3	295	885
	50A	2	10	3	274	822
V201	60B	3	5	11	151	1661
	50A	4	6.3	8	218	1744
	60B	1	5	2	370	740
	50A	2	10	6	190	1140
	50A	3	12.5	3	630	1890
V202	50A	4	8	6	105	630
	60B	5	5	32	151	4832
	50A	6	6.3	8	594	4752
	50A	1	6.3	2	380	760
	50A	2	10	6	190	1140
V203	50A	3	20	2	650	1300
	50A	4	12.5	3	390	975
	50A	5	8	6	105	630
	60B	6	5	37	151	5587
	50A	7	6.3	8	594	4752
V204	50A	1	6.3	2	380	760
	50A	2	10	6	190	1140
	50A	3	20	2	650	1300
	50A	4	12.5	3	390	975
	50A	5	8	6	105	630
V205	60B	6	5	37	151	5587
	50A	7	6.3	8	594	4752
	50A	1	6.3	2	380	760
	50A	2	10	6	190	1140
	50A	3	16	3	640	1920
V206	50A	4	10	6	121	726
	60B	5	5	32	151	4832
	50A	6	6.3	8	594	4752
	50A	1	6.3	2	380	760
	50A	2	10	3	210	630

RESUMO AÇO CA 50-60				
AÇO	BIT (mm)	COMPR (m)	PESO (kg)	
60B	5	505	78	
50A	6.3	486	119	
50A	8	19	8	
50A	10	297	183	
50A	12.5	39	38	
50A	15	19	30	
50A	20	17	42	
Peso Total		60B =	78 kg	
Peso Total		50A =	419 kg	

fck 250. kg/cm2 - C25

Schuring & Schuring

PROJETO:

PROPRIETÁRIO:

RESP. TEC. EXECUÇÃO:

OBRA:

AUTORES DO PROJETO:

ASSUNTO:

Benedito Eliseu Schuring  
Eng.Civil- CREA 715/D-MT

DET ARM VIGAS

Andre Luiz Schuring  
Eng.Civil- CREA 8697/D-MT

FECHAS DETALHADAS  
V102 / V104 / V105 / V201 / V202 / V203  
V204 / V205 / V206

FOR: 250

DIREITOS AUTORES RESERVADOS

DATA: 02/09/2018

ESCALA: 1:50

VERIFICAR MEDIDAS NA OBRA

FOLHA No: 05